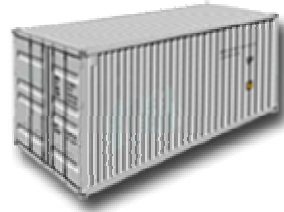


General Purpose

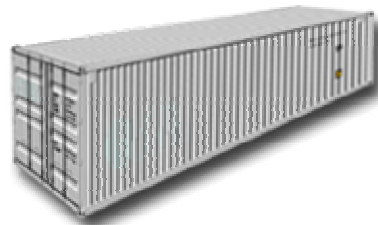
These containers are offered in 20 ft and 40 ft. Manufactured from either Aluminium or steel, they are suitable for most types of cargo. Aluminium containers have a slightly larger payload than steel, and steel containers have a slightly larger internal cube.

20' x 8' x 8'6"



		Steel	
		Millimetres	Feet
Internal Dimensions	Length	5.898	19'4,2"
	Width	2.352	7'8,6"
	Height	2.391	7'10"
Door Opening	Width	2.340	7'8"
	Height	2.280	7'5,8"
		Kilograms	Pounds
Weight	Max Gross	24.000	52.910
	Tare	2.280	5.090
	Max Payload	21.720	47.885
		Cube Metres	Cube Feet
Internal Capacity		33,2	1.171

40' x 8' x 8'6"



		Steel		Aluminium	
		Millimetres	Feet	Millimetres	Feet
Internal Dimensions	Length	12,040	39'5,3"	12.021	39'5,3"
	Width	2,353	7'8,5"	2.335	7'8,9"
	Height	2,383	7'9,7"	2.360	7'8,9"
Door Opening	Width	2,340	7'8"	2.337	7'7,9"
	Height	2,280	7'5,8"	2.271	7'5,4"
		Kilograms	Pounds	Kilograms	Pounds
Weight	Max Gross	30.480	67.200	32.000	70.040
	Tare	3.830	8.450	3.170	6.990
	Max Payload	26.650	58.630	28.830	63.500
		Cube Metres	Cube Feet	Cube Metres	Cube Feet
Internal Capacity		67,7	2.390	67,7	2.380